

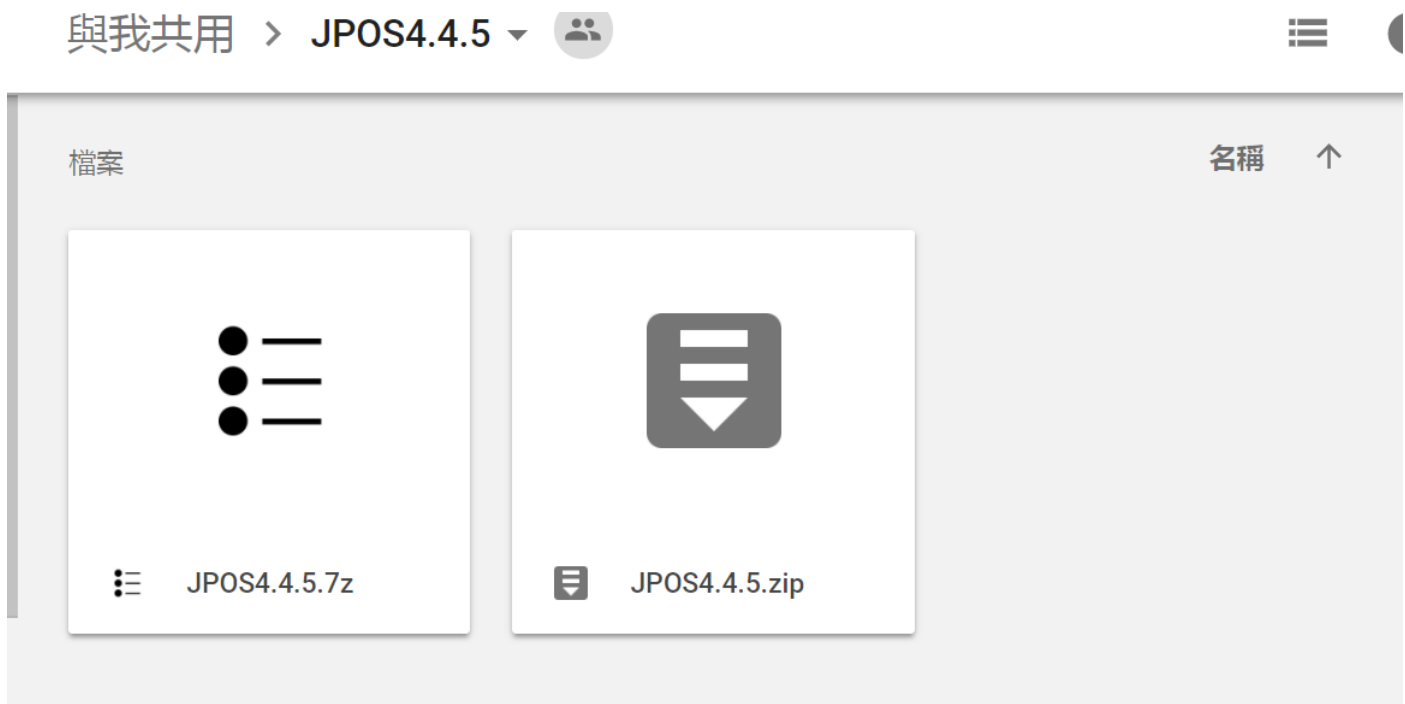
# VFD JPOS

---

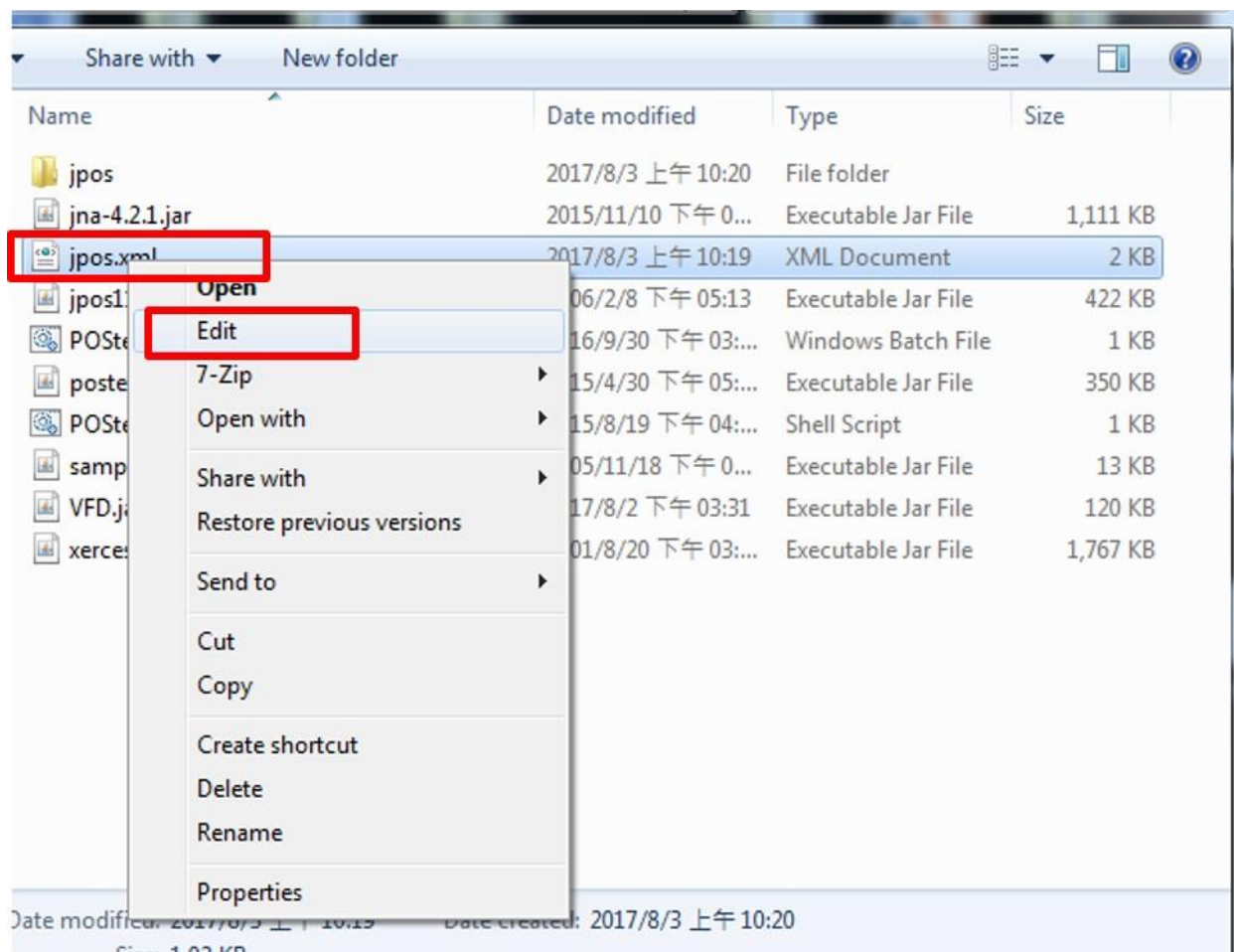
## Testing Guide

1. After click the link that I offered, you will see below two file,

The two file "JPOS4.4.5.7z" or "JPOS4.4.5.zip." **is the same**, please kindly choose one.



2. Then right click the file "**jpos.xml**", then select "**Edit**".



3. (A)Then you can modify the **LogicalName** and **Vendorname** as you want.



The screenshot shows a Notepad window titled 'jpos.xml - Notepad'. The XML content is as follows:

```
<?xml version="1.0" encoding="UTF-8"?>
<!DOCTYPE JposEntries PUBLIC "-//JavaPOS//DTD//EN"
    "jpos/res/jcl.dtd">

<JposEntries>
<!--Saved by JavaPOS jpos.config/loader (JCL) version 2.1.0-RC3 on 10/26/04 8:17 AM-->
<JposEntry logicalName="Labau_Display">
  <creation factoryClass="WFD.DeviceServiceInstanceFactory" serviceClass="WFD.DisplayService17"/>
  <vendor name="Labau" url="http://www.labau.com"/>
  <jpos category="LineDisplay" version="1.7"/>
  <product description="Example LineDisplay " name="LineDisplay Service for JavaPOS(TM) Standard
  <prop name="portName" type="String" value="COM1"/>
  <prop name="baudRate" type="String" value="9600"/>
  <prop name="CharacterSet&SCIIBehavior" type="String" value="437"/>
  <Prop name="commNumberOfRows" type="String" value="2"/>
  <Prop name="commNumberOfColumns" type="String" value="20"/>
  <!--Other non JavaPOS required property (mostly vendor properties and bus specific properties
</JposEntry>
</JposEntries>
```

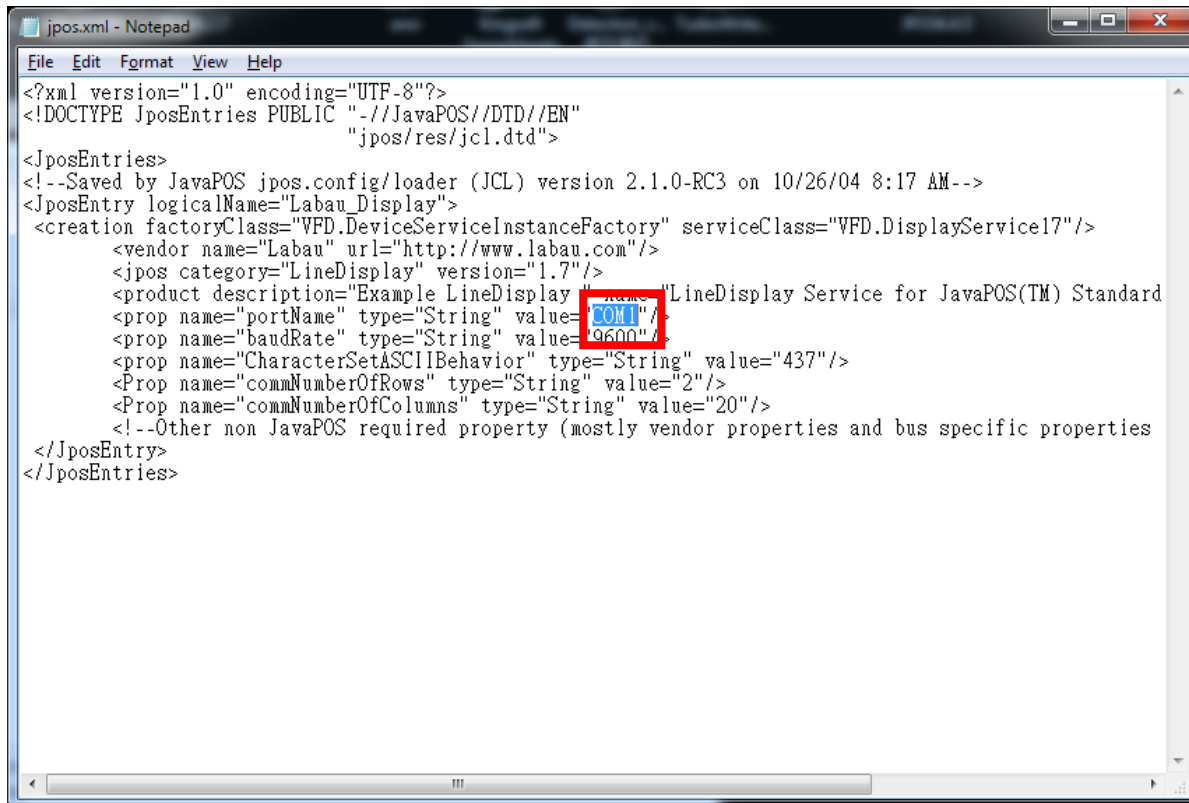
In this image, the value "Labau\_Display" in the `logicalName` attribute and the value "Labau" in the `name` attribute of the `vendor` element are both highlighted with red rectangles.



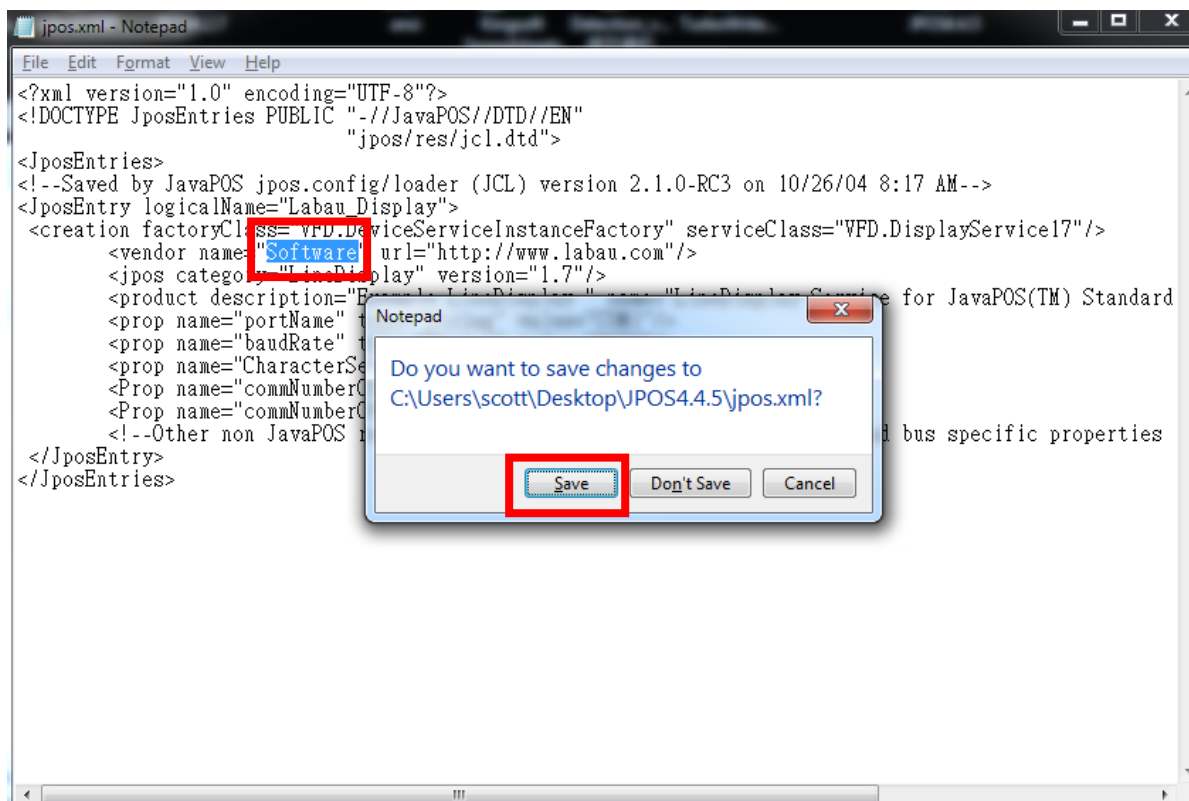
The screenshot shows the same Notepad window with the same XML content. In this version, only the value "Labau" in the `name` attribute of the `vendor` element is highlighted with a red rectangle.

(B) Please revise the “Com port” description in the **xml file** also.

**And remember to save the file when you leave.**

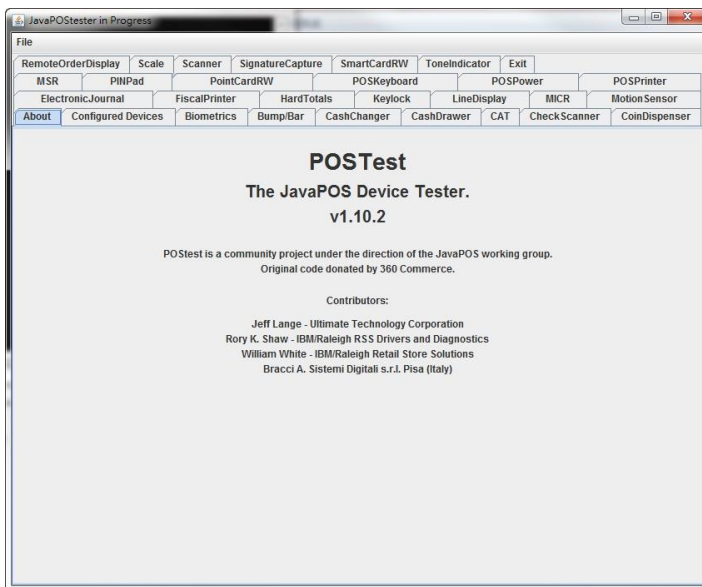
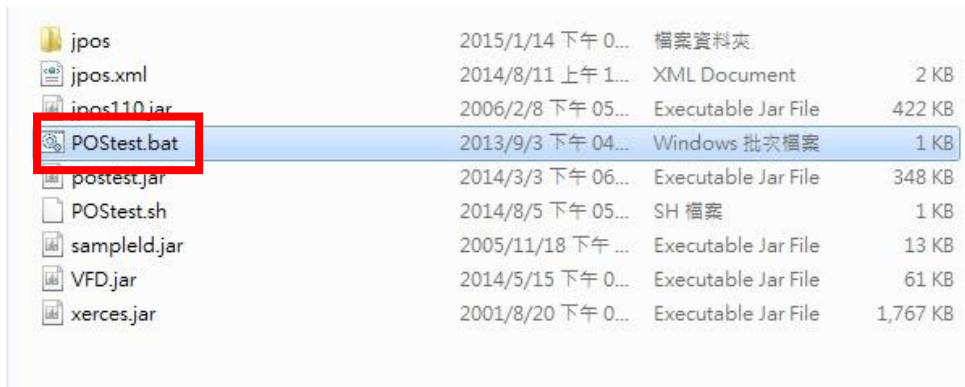


```
<?xml version="1.0" encoding="UTF-8"?>
<!DOCTYPE JposEntries PUBLIC "-//JavaPOS//DTD//EN"
    "jpos/res/jcl.dtd">
<JposEntries>
<!--Saved by JavaPOS jpos.config/loader (JCL) version 2.1.0-RC3 on 10/26/04 8:17 AM-->
<JposEntry logicalName="Labau_Display">
  <creation factoryClass="VFD.DeviceServiceInstanceFactory" serviceClass="VFD.DisplayService17"/>
  <vendor name="Labau" url="http://www.labau.com"/>
  <jpos category="LineDisplay" version="1.7"/>
  <product description="Example LineDisplay" name="LineDisplay Service for JavaPOS(TM) Standard" />
  <prop name="portName" type="String" value="COM1"/>
  <prop name="baudRate" type="String" value="9600"/>
  <prop name="CharacterSetASCIIBehavior" type="String" value="437"/>
  <Prop name="commNumberOfRows" type="String" value="2"/>
  <Prop name="commNumberOfColumns" type="String" value="20"/>
  <!--Other non JavaPOS required property (mostly vendor properties and bus specific properties
</JposEntry>
</JposEntries>
```

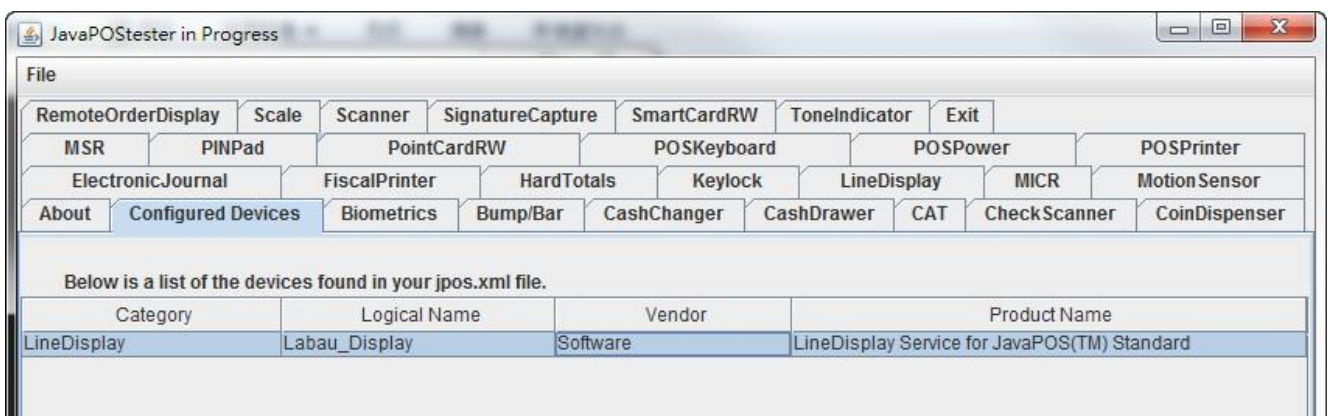


```
<?xml version="1.0" encoding="UTF-8"?>
<!DOCTYPE JposEntries PUBLIC "-//JavaPOS//DTD//EN"
    "jpos/res/jcl.dtd">
<JposEntries>
<!--Saved by JavaPOS jpos.config/loader (JCL) version 2.1.0-RC3 on 10/26/04 8:17 AM-->
<JposEntry logicalName="Labau_Display">
  <creation factoryClass="VFD.DeviceServiceInstanceFactory" serviceClass="VFD.DisplayService17"/>
  <vendor name="Software" url="http://www.labau.com"/>
  <jpos category="LineDisplay" version="1.7"/>
  <product description="Example LineDisplay" name="LineDisplay Service for JavaPOS(TM) Standard" />
  <prop name="portName" type="String" value="COM1"/>
  <prop name="baudRate" type="String" value="9600"/>
  <prop name="CharacterSetASCIIBehavior" type="String" value="437"/>
  <Prop name="commNumberOfRows" type="String" value="2"/>
  <Prop name="commNumberOfColumns" type="String" value="20"/>
  <!--Other non JavaPOS required property (mostly vendor properties and bus specific properties
</JposEntry>
</JposEntries>
```

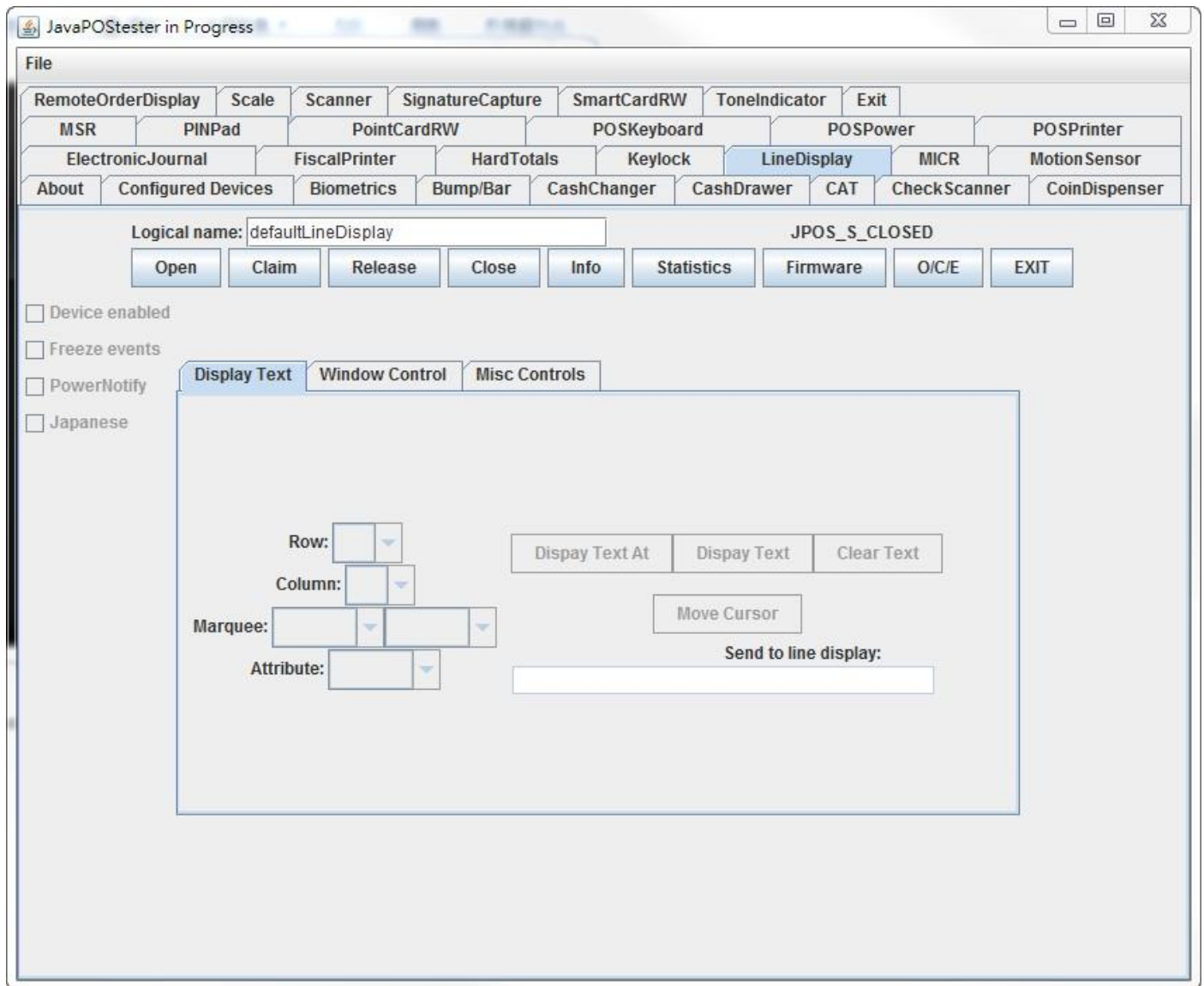
- After saved the **jpos.xml** file, please double clicking the file “**POStest.bat**” to start up the testing AP.



- Then all the information you revise would be shown in the “**configured Devices**” sheet.



6. And you can start the testing in “**LineDisplay**” Sheet.



\*\*\*\*\*The End\*\*\*\*\*