



AerPOS

Language settings

User Manual

Ver. 1.0

COPYRIGHT NOTICE

This document is copyrighted, © 2016. All rights are reserved. Importer reserves the right to make improvements of the product described in this manual at any time without notice.

No part of this manual may be reproduced, copied, translated, or transmitted in any form or by any means without the prior written permission from importer. Information provided in this manual is intended to be accurate and reliable. However, importer assumes no responsibility for its use, nor for any infringements upon the rights of third parties, which may result from its use.

The material in this document is for product information only and is subject to change without notice. While reasonable efforts have been made in the preparation of this document to assure its accuracy, importer assumes no liabilities resulting from errors or omissions in this document, or from the use of the information contained herein.



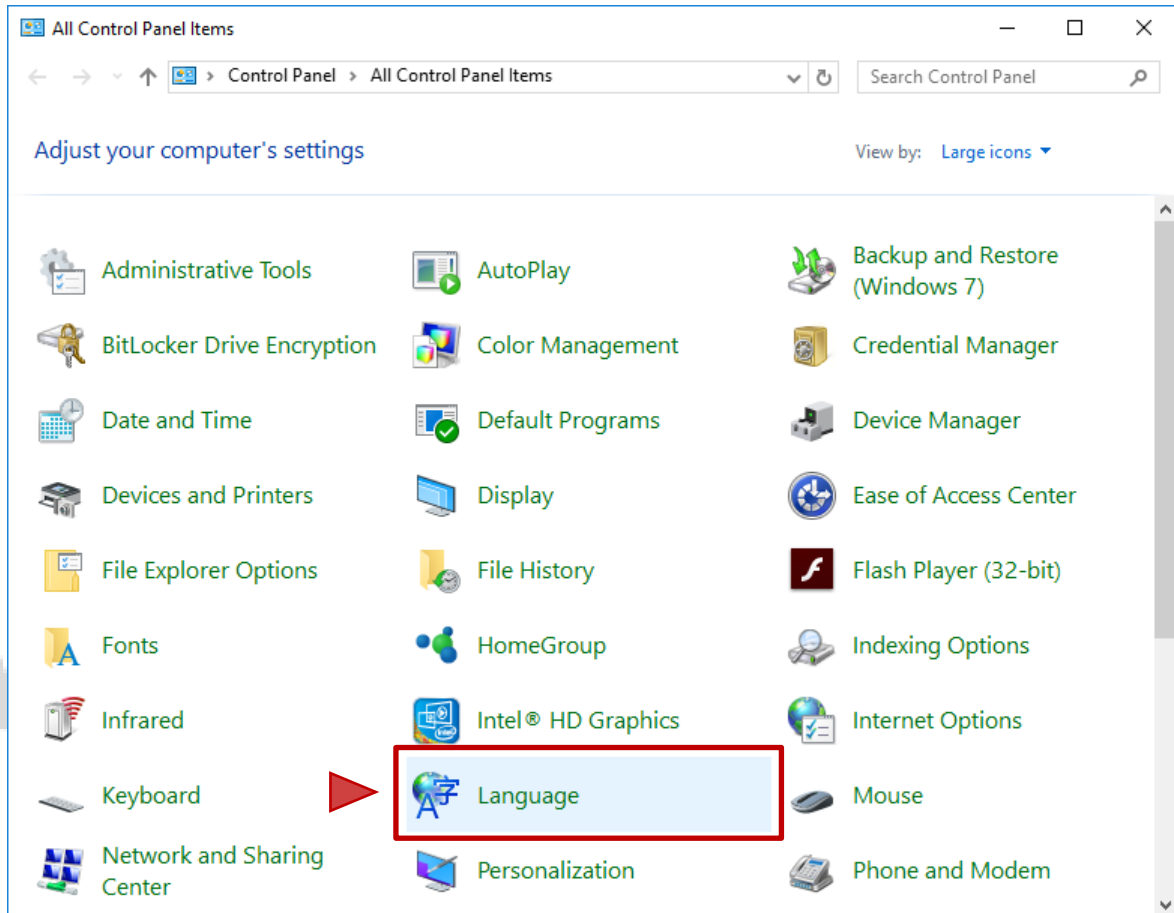
VIRTUOS



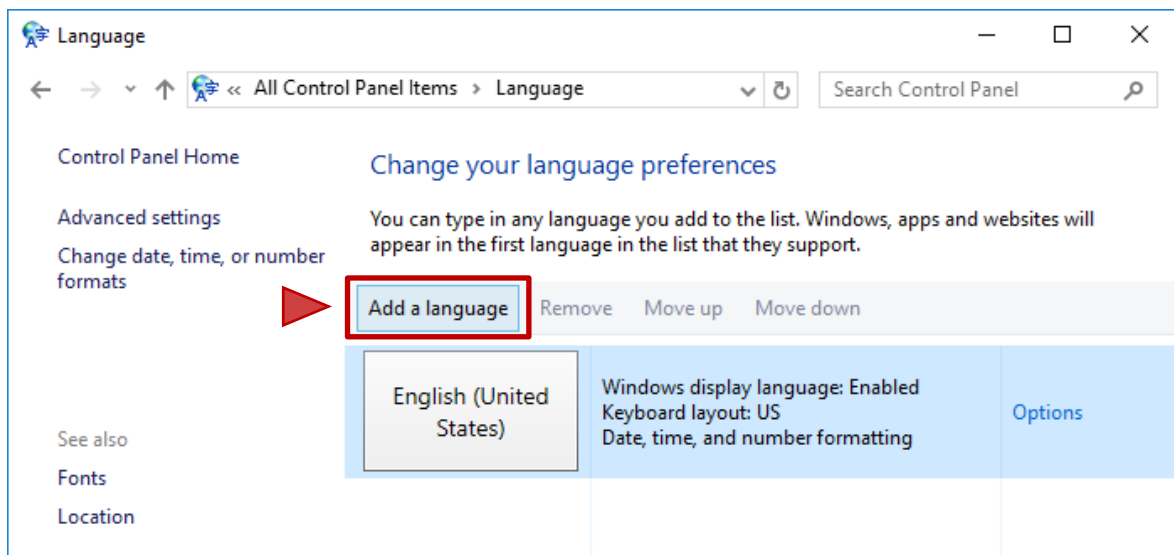
SYSTEM LANGUAGE SETTING ON WINDOWS 10 IoT

This guide will explain how to install a new language on the AerPOS with Windows 10 IoT and how to set it as default language. Screenshots are created in the English version of Windows and the German language is added as an example.

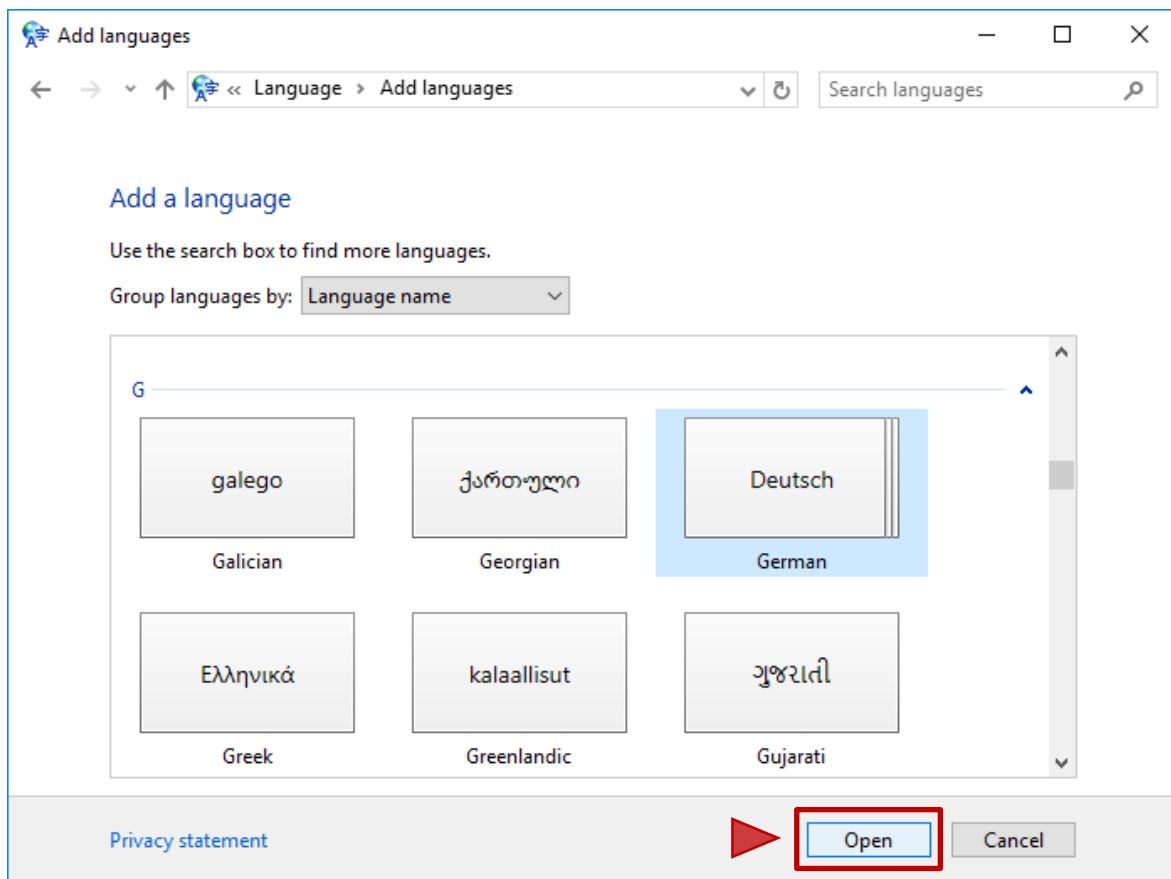
1. Open “Control Panel” and select “Language”.



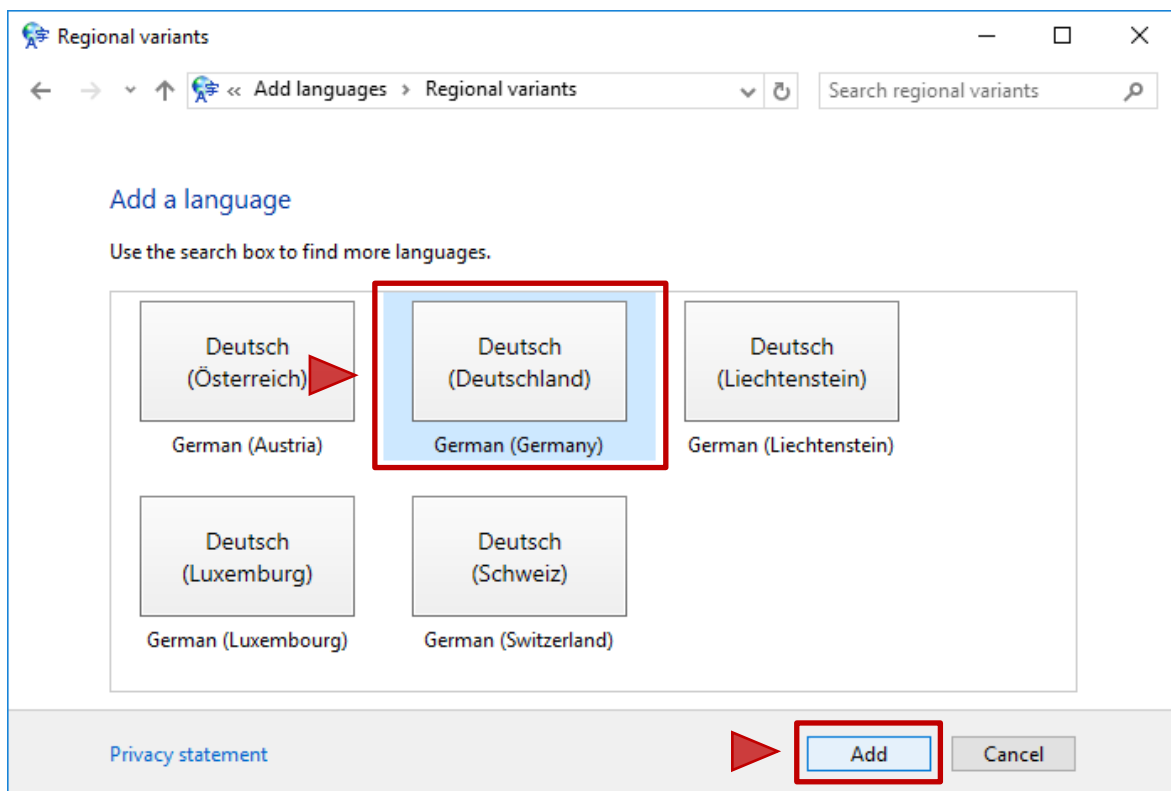
2. Click on “Add a language”.



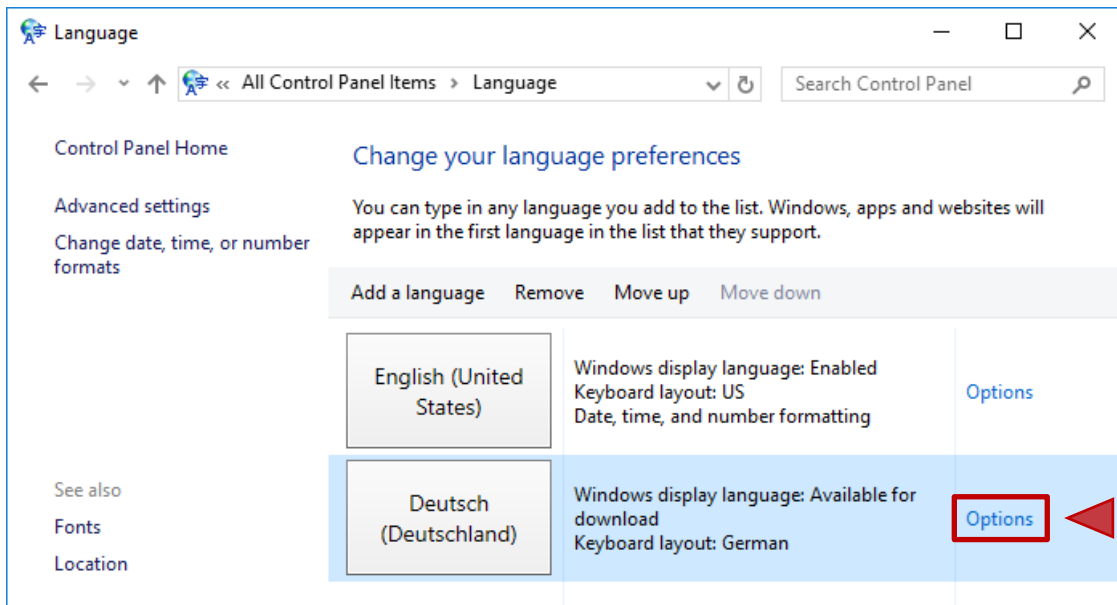
3.A. Select a language or language group and click on “Open”.



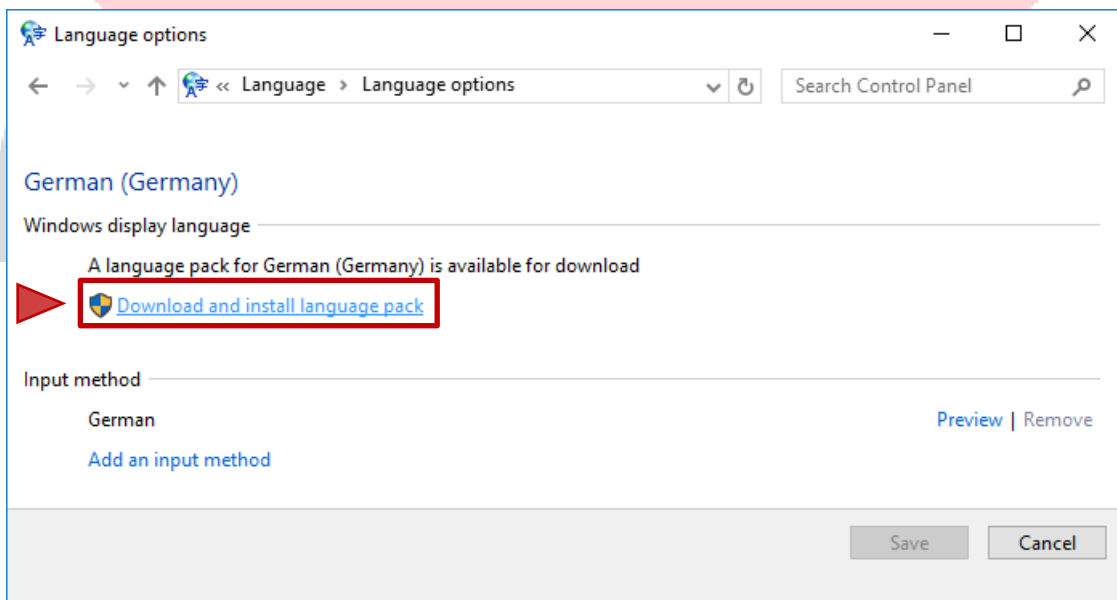
3.B. Select the regional variant and click on “Add”.



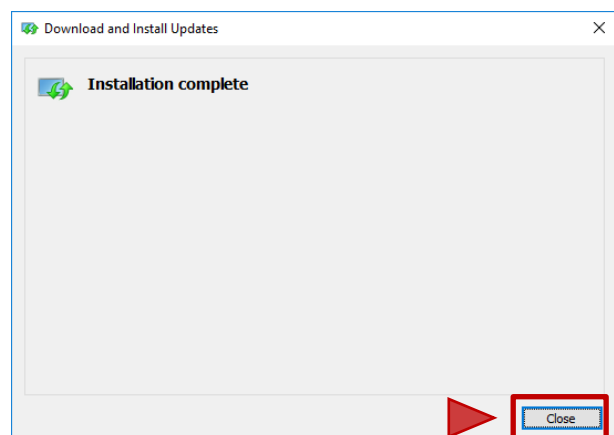
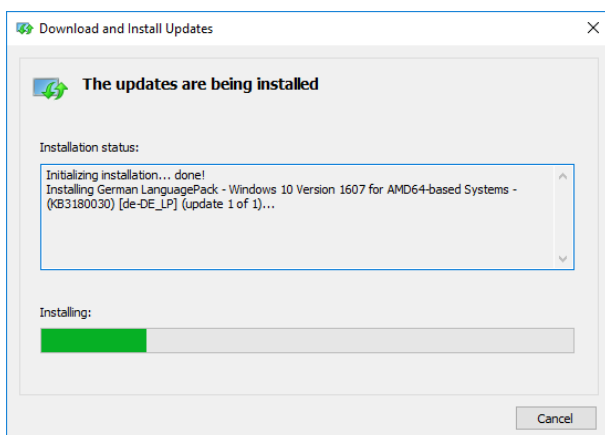
4. Select the added language and click on “Options”.



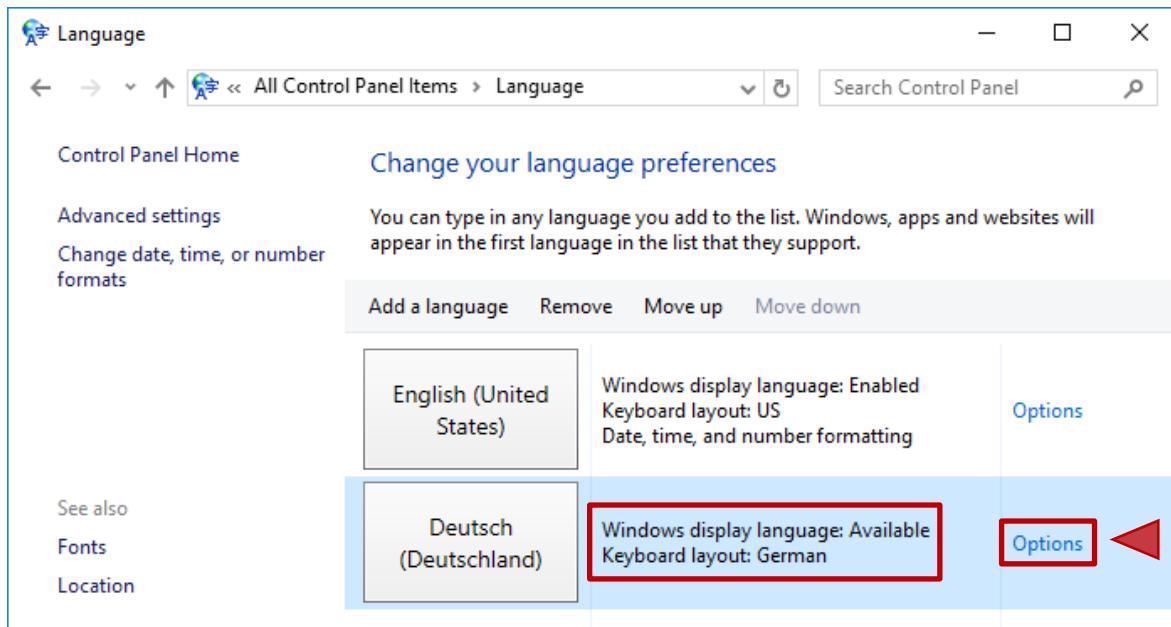
5. Click on “Download and install language pack”.



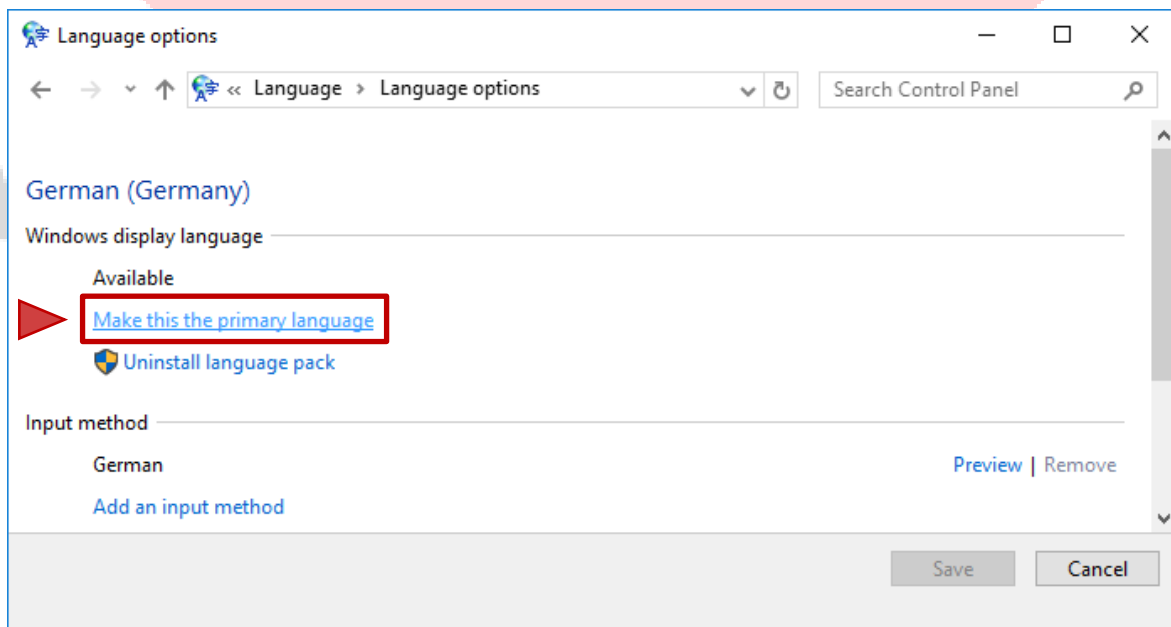
6. It may take several minutes. Click "Close" when installation is complete.



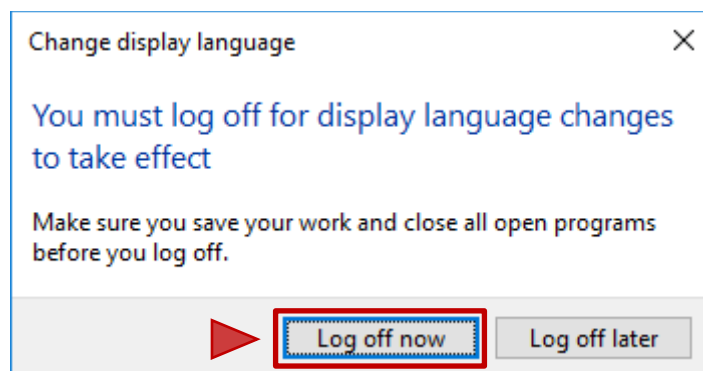
7. After downloading, the status changes to **"Available"**. Click on **"Options"** again.



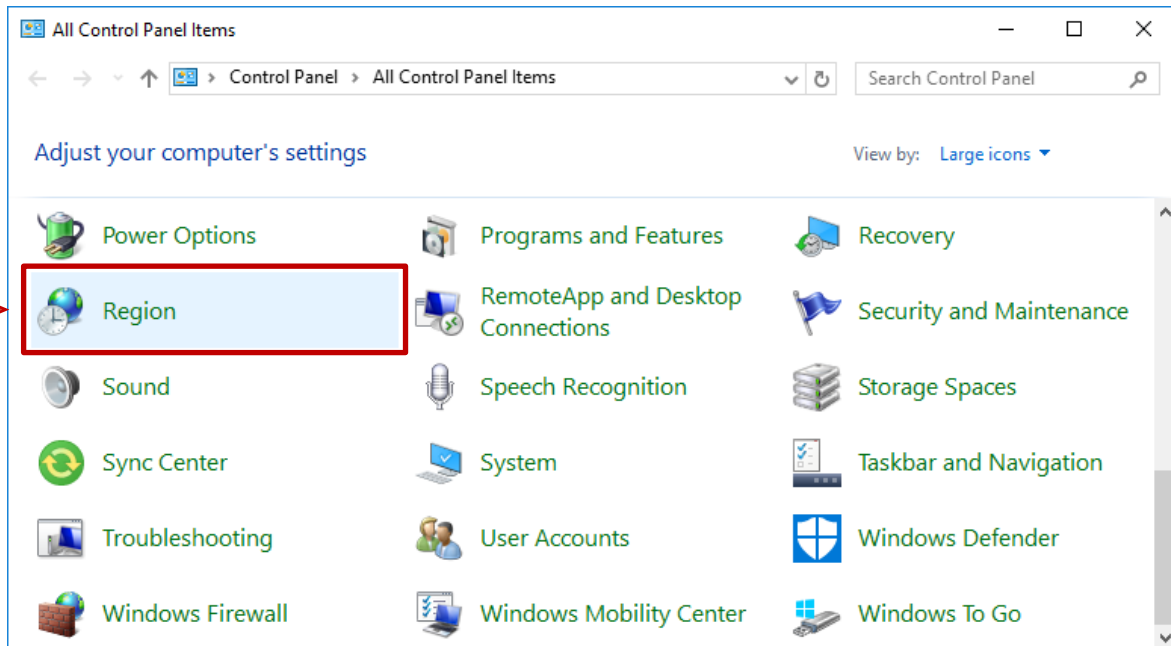
8. Click on **"Make this the primary language"**.



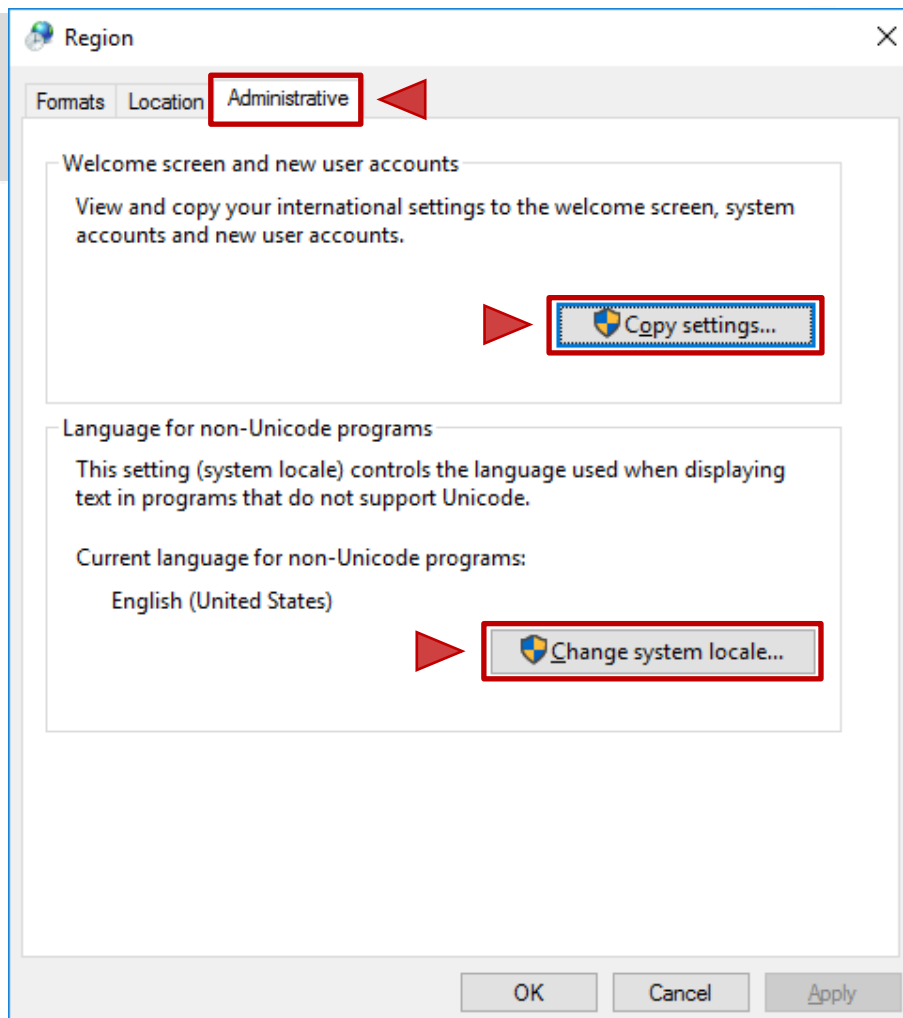
9. You must log off for language changes to take effect. Click on **"Log off now"**.



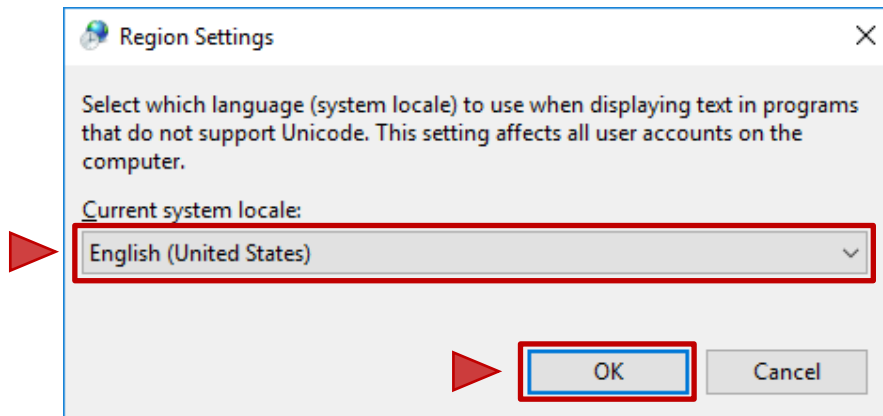
10. To apply the language to all the system and user interface you have to open the standard "Control Panel" and click on the "Region" icon.



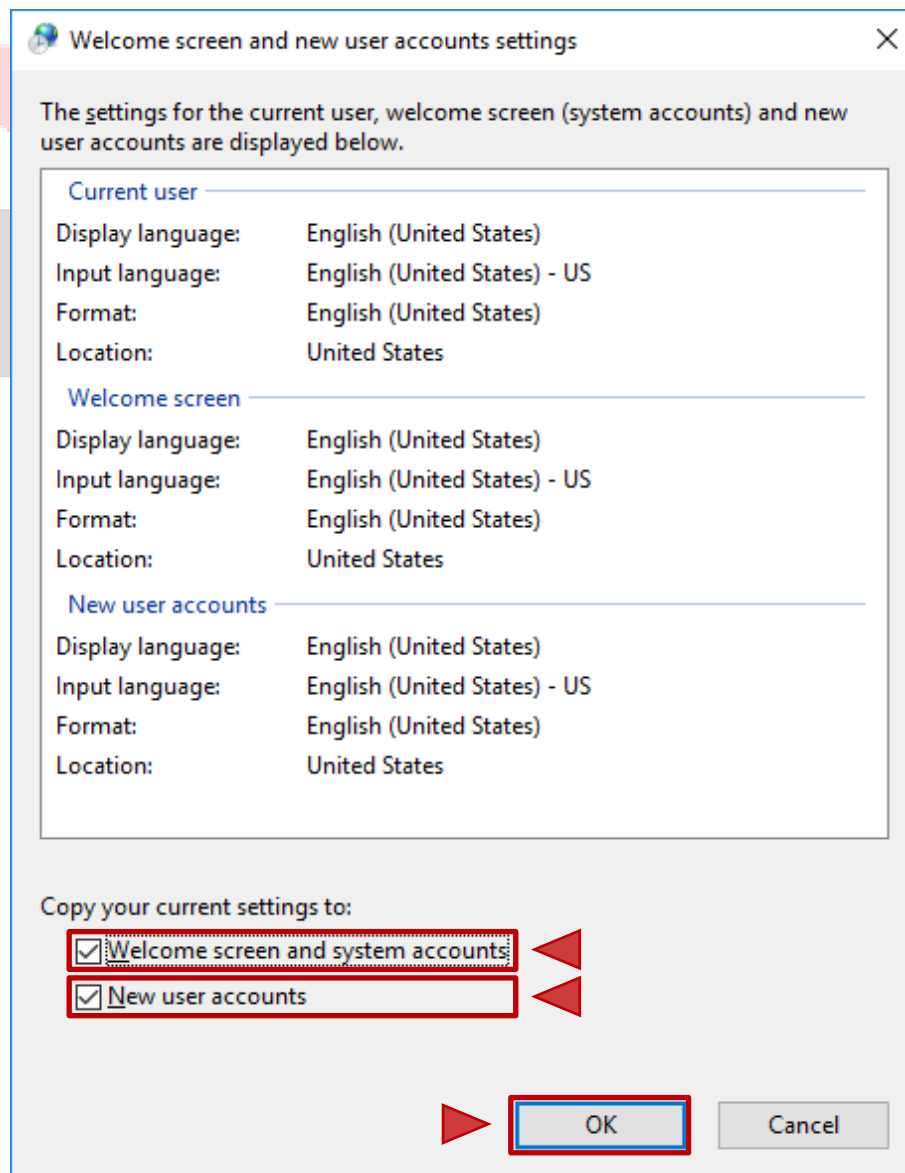
11.A. Select the "Administrative" tab and click on "Copy settings..." first.



11.B. From the combo box select the desired language and click “OK”.



11.C. From the previous window click on “Change System Locale...” and then flag the two options “Welcome screen and system accounts” and “New user accounts”. Click “OK” on this window and on the previous window to save the configuration.



The systems asks to reboot the device, click to reboot it.