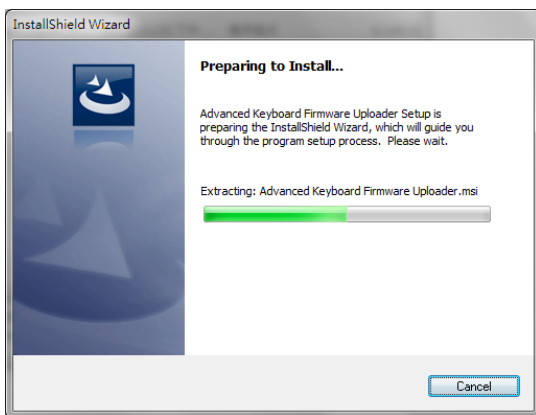
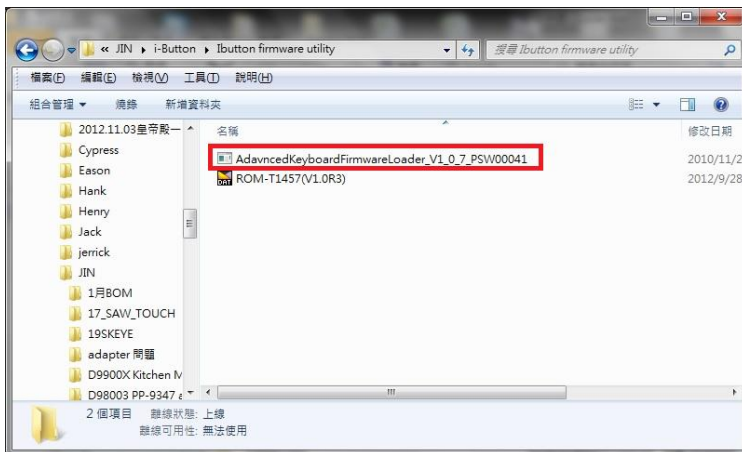
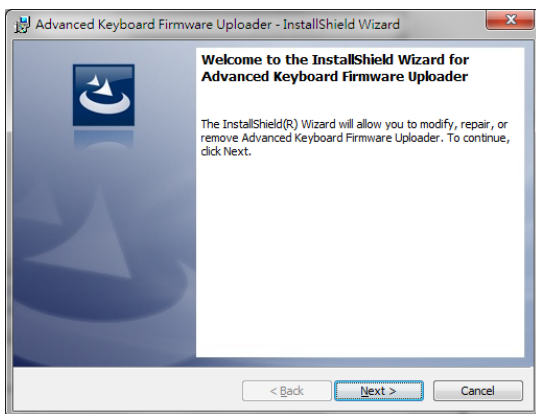


# I-Button Up date Firmware SOP

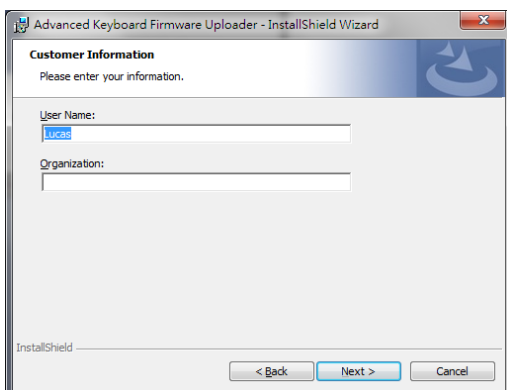
## 1. Install “AdavncedKeyboardFirmwareLoader\_V1\_0\_7\_PSW00041.EXE”



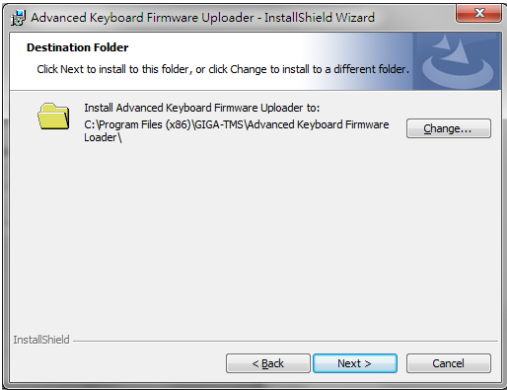
Next



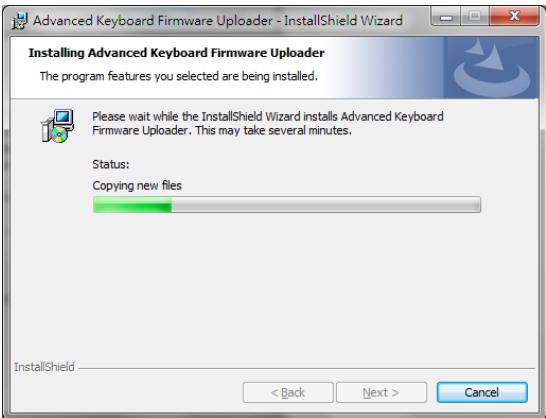
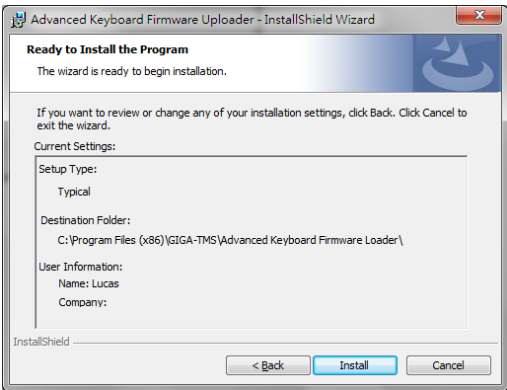
Next



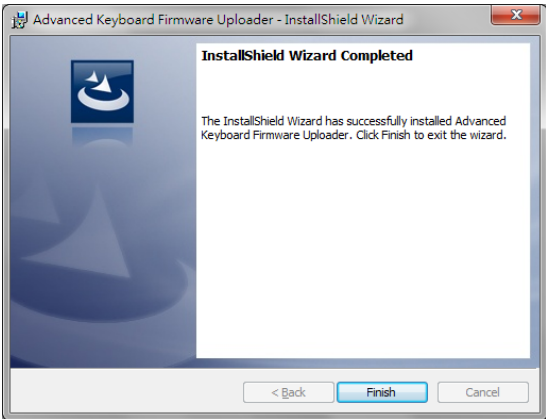
Next



Install

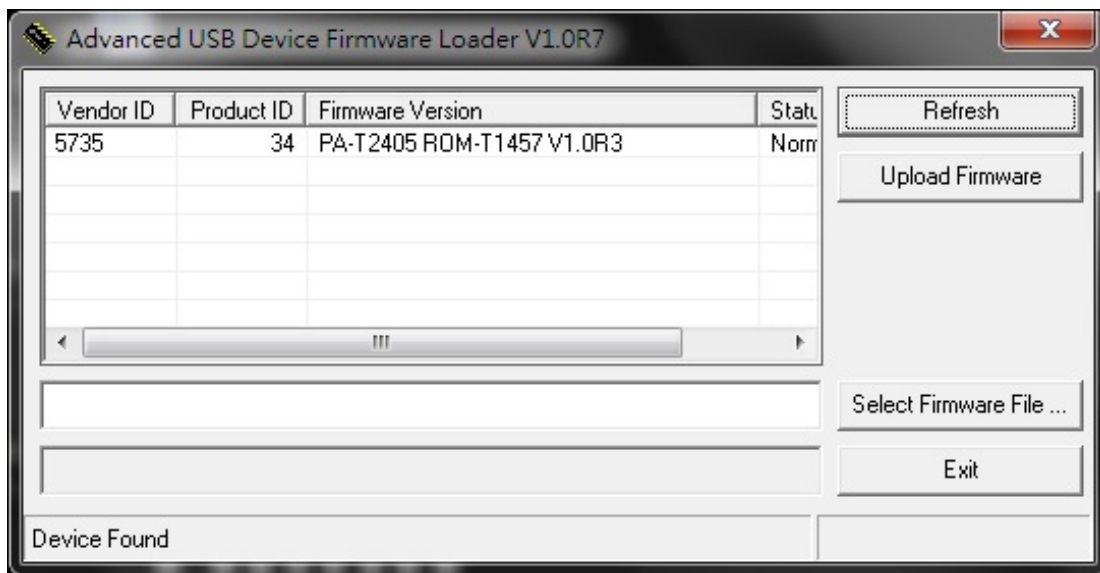
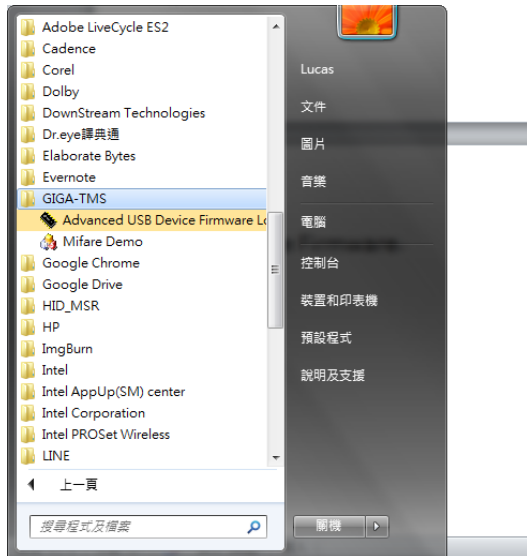


Finish

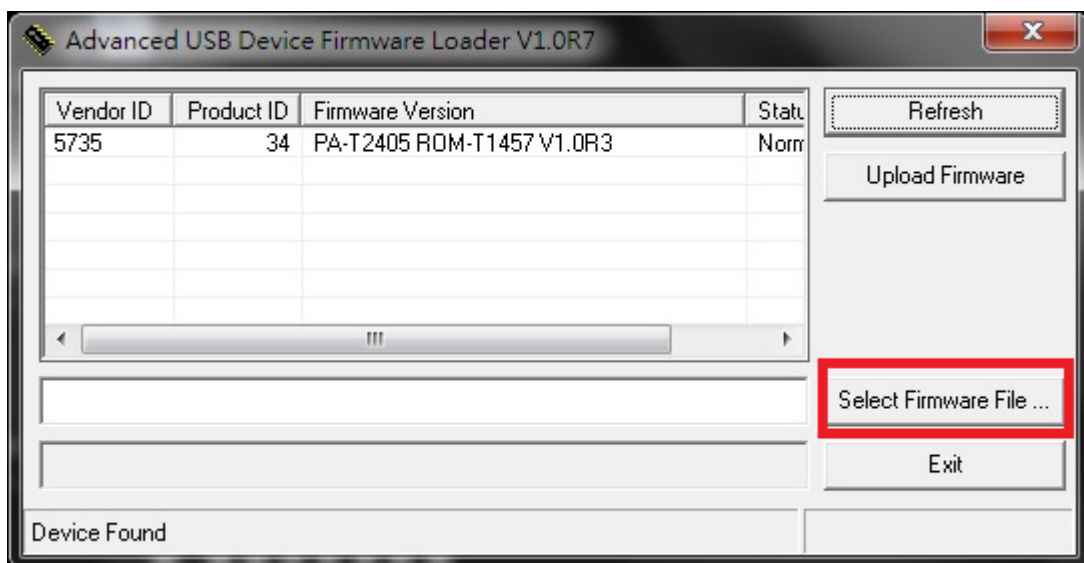


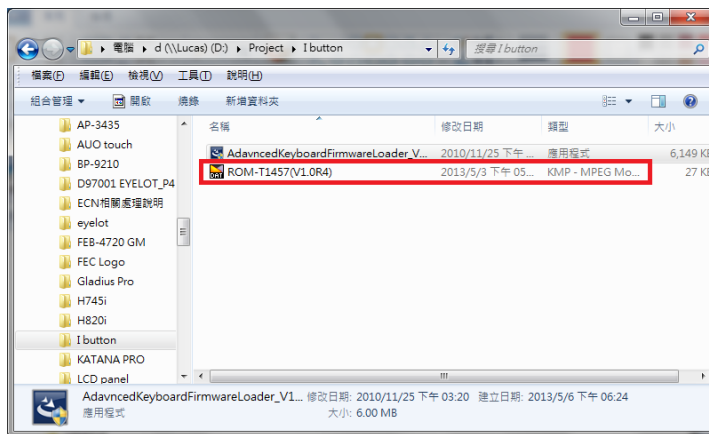
## 2. Up date Firmware

Open “AdavncedKeyboardFirmwareLoader\_V1\_0\_7”

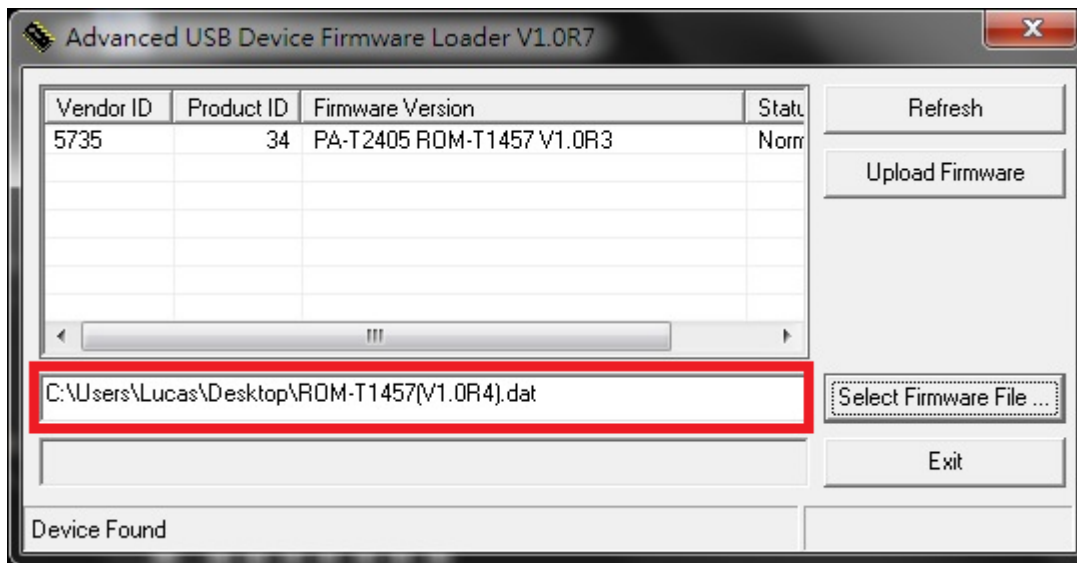


Select Firmware File

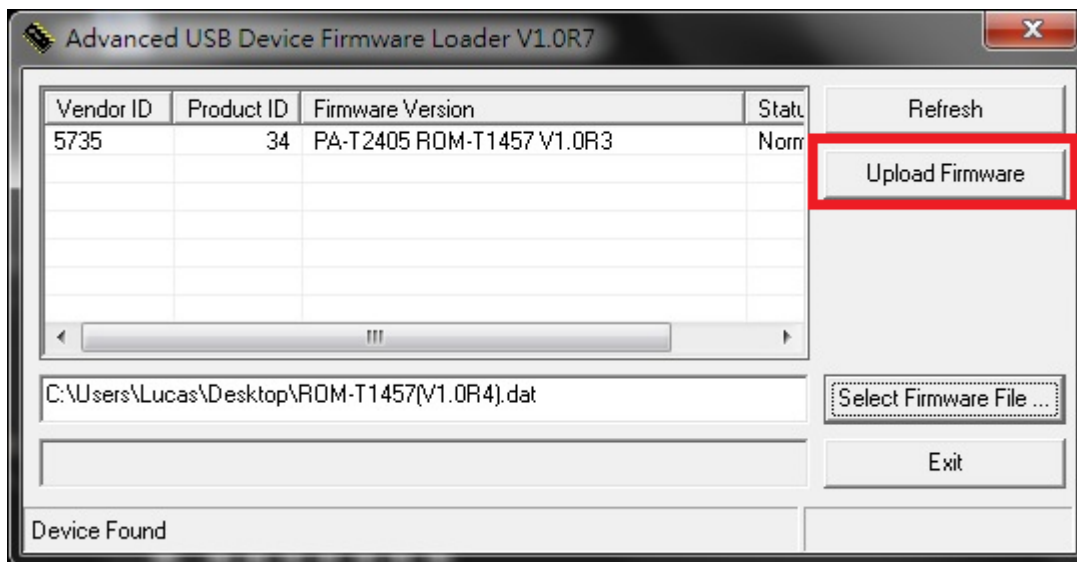


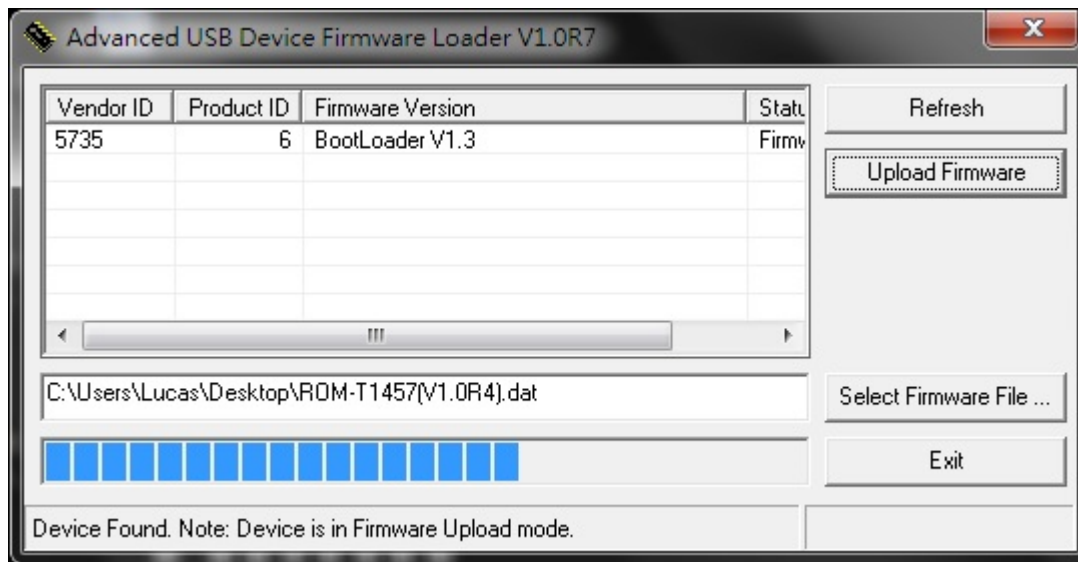


Check file name



Click Upload Firmware





Check Firmware Finish

